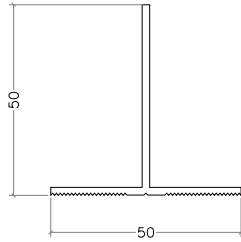
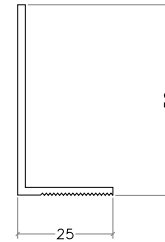




code	profile	profile features	code	profile	profile features
------	---------	------------------	------	---------	------------------



T Profile (50x50)



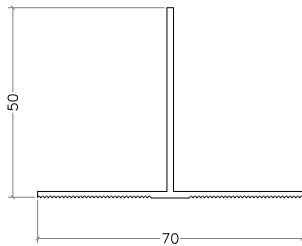
L Profile (25x50)

TP01

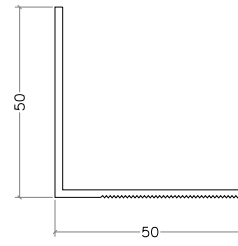
colour : ral

LP01

colour : ral



T Profile (70x50)



L Profile (50x50)

TP02

colour : ral

LP02

colour : ral

3,9x19 YHB (M.U.V)



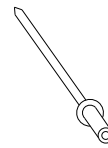
3,9x19 YSB (M.U.V)



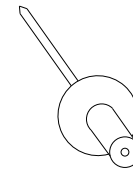
4,8x16 YSB (M.U.V)



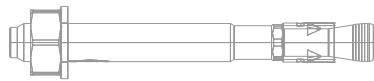
AKB 5,5x25 (M.U.V)



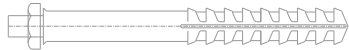
4x10 Rivet



4,8x25 Rivet
(Supply by requested ral code)



Steel Dowel



Plastic Dowel

MS Polymer Sealant (600cc)



Instant Adhesive - Glue

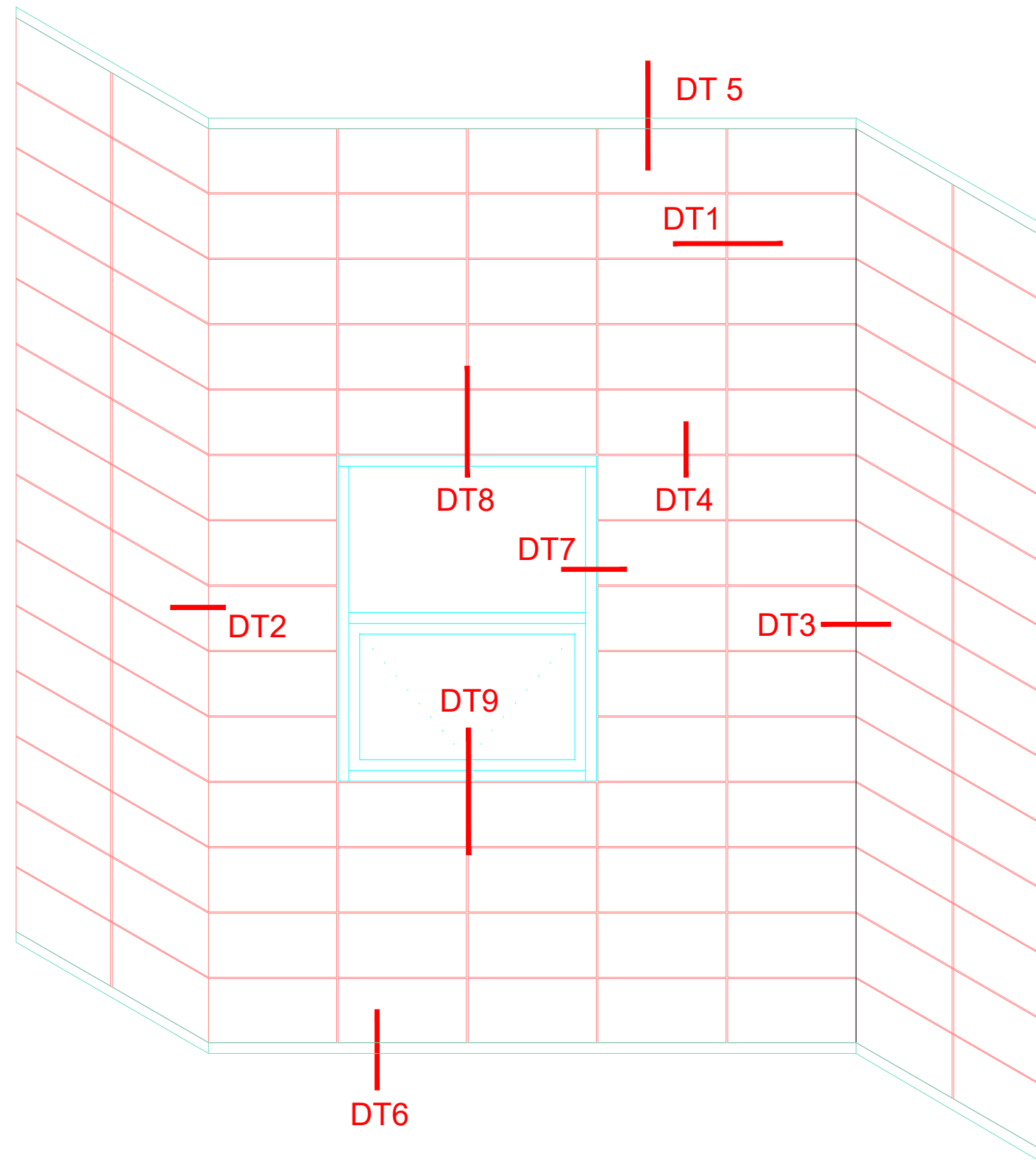


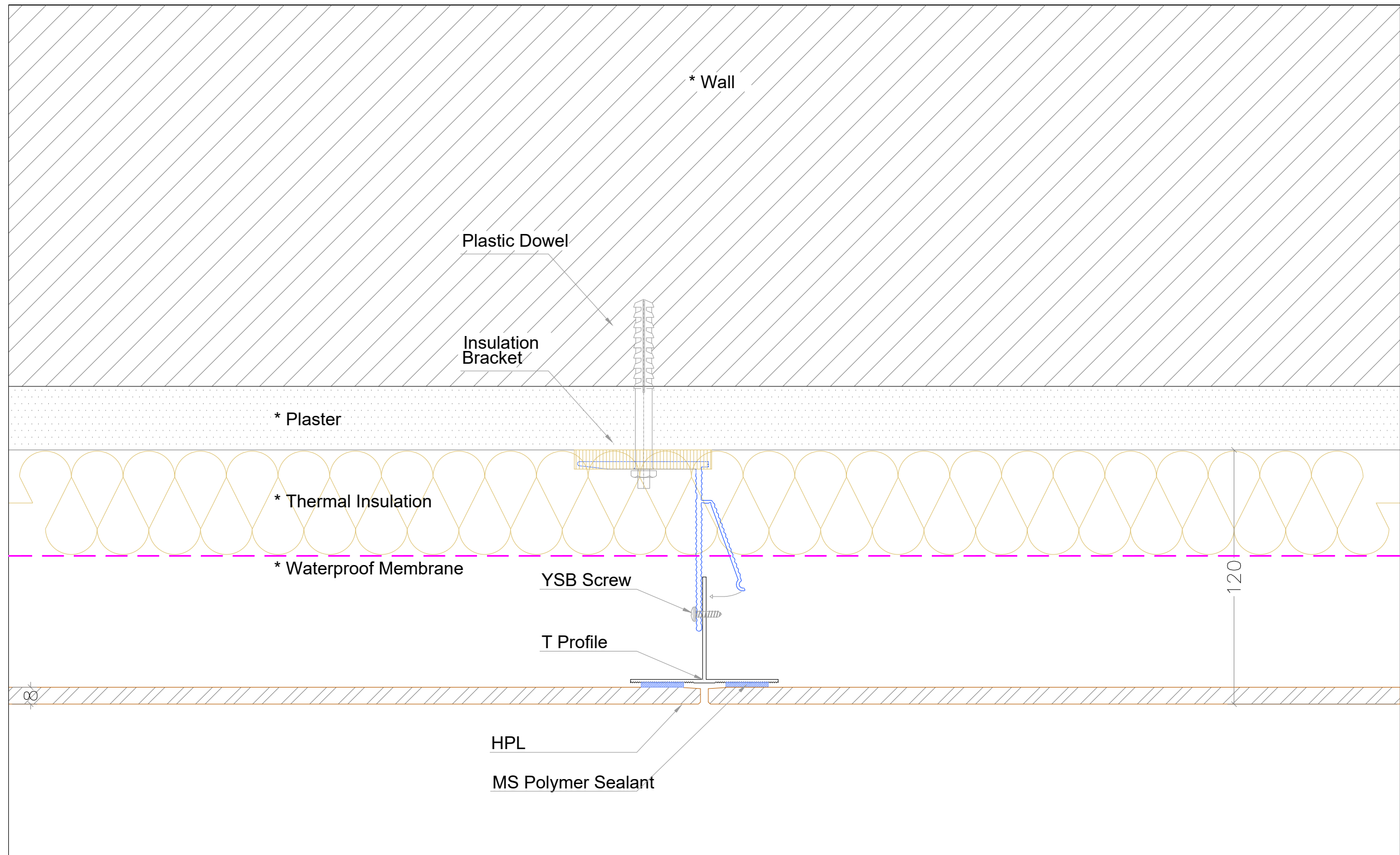
Double Sided Tape

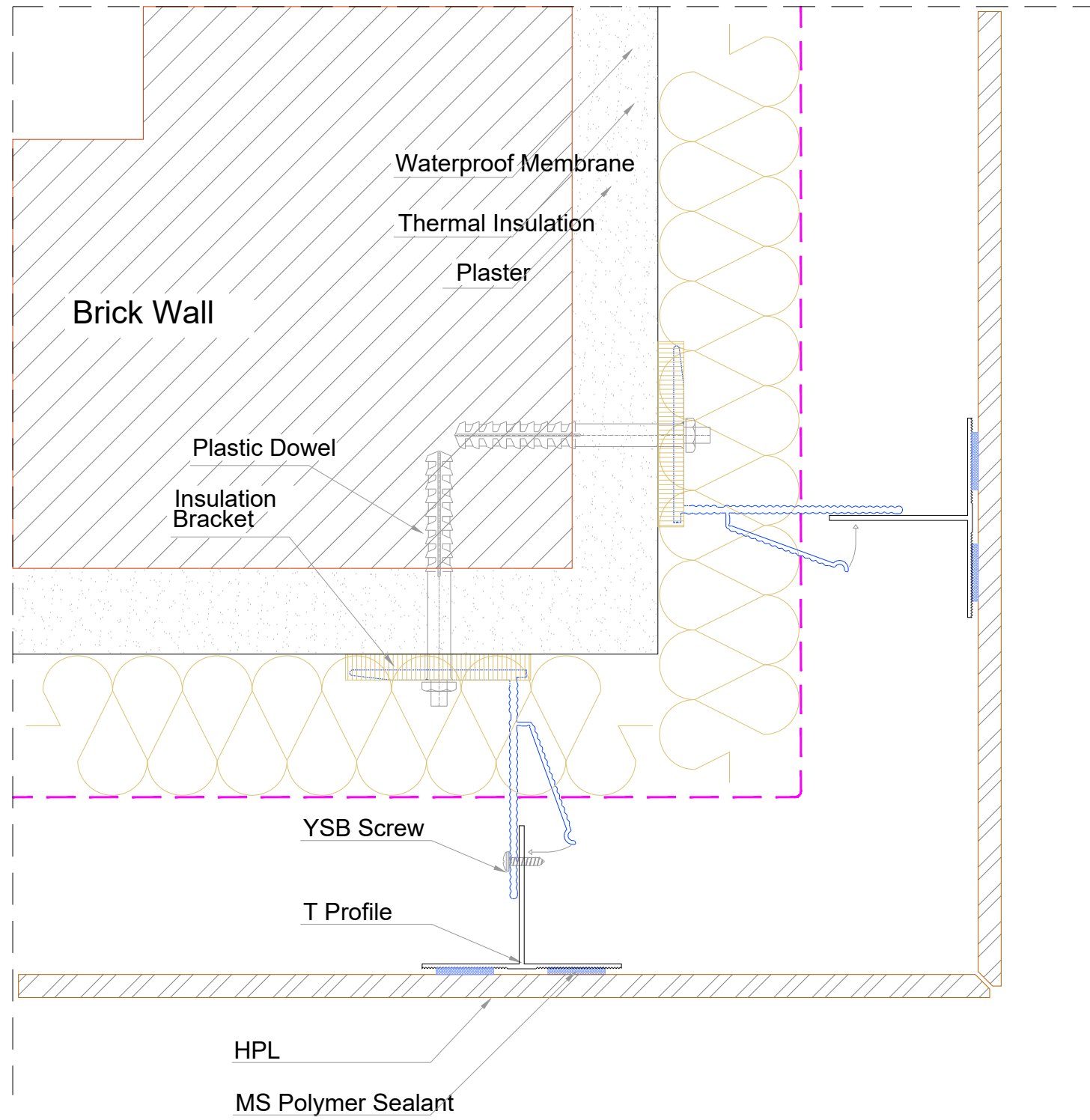


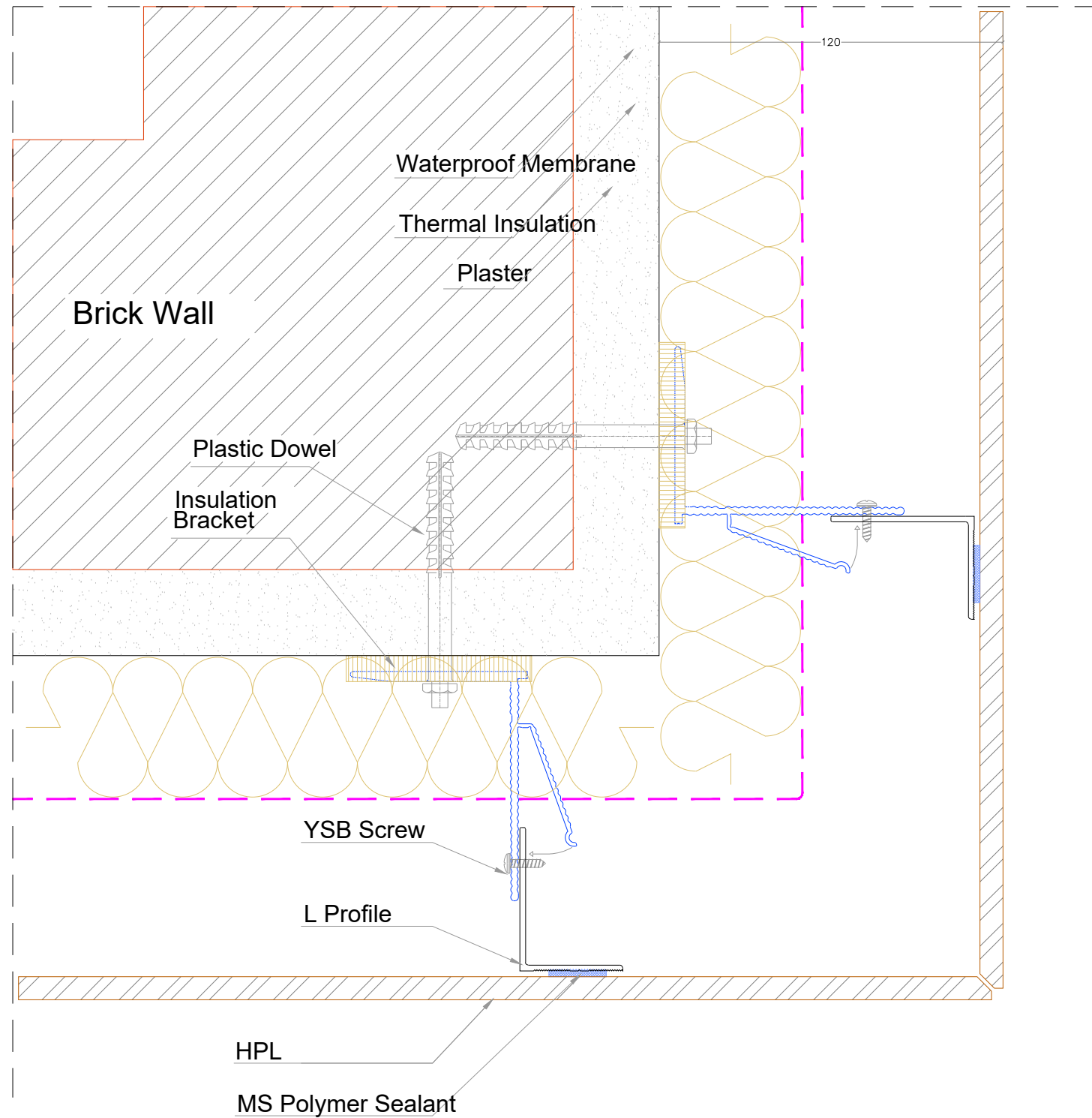


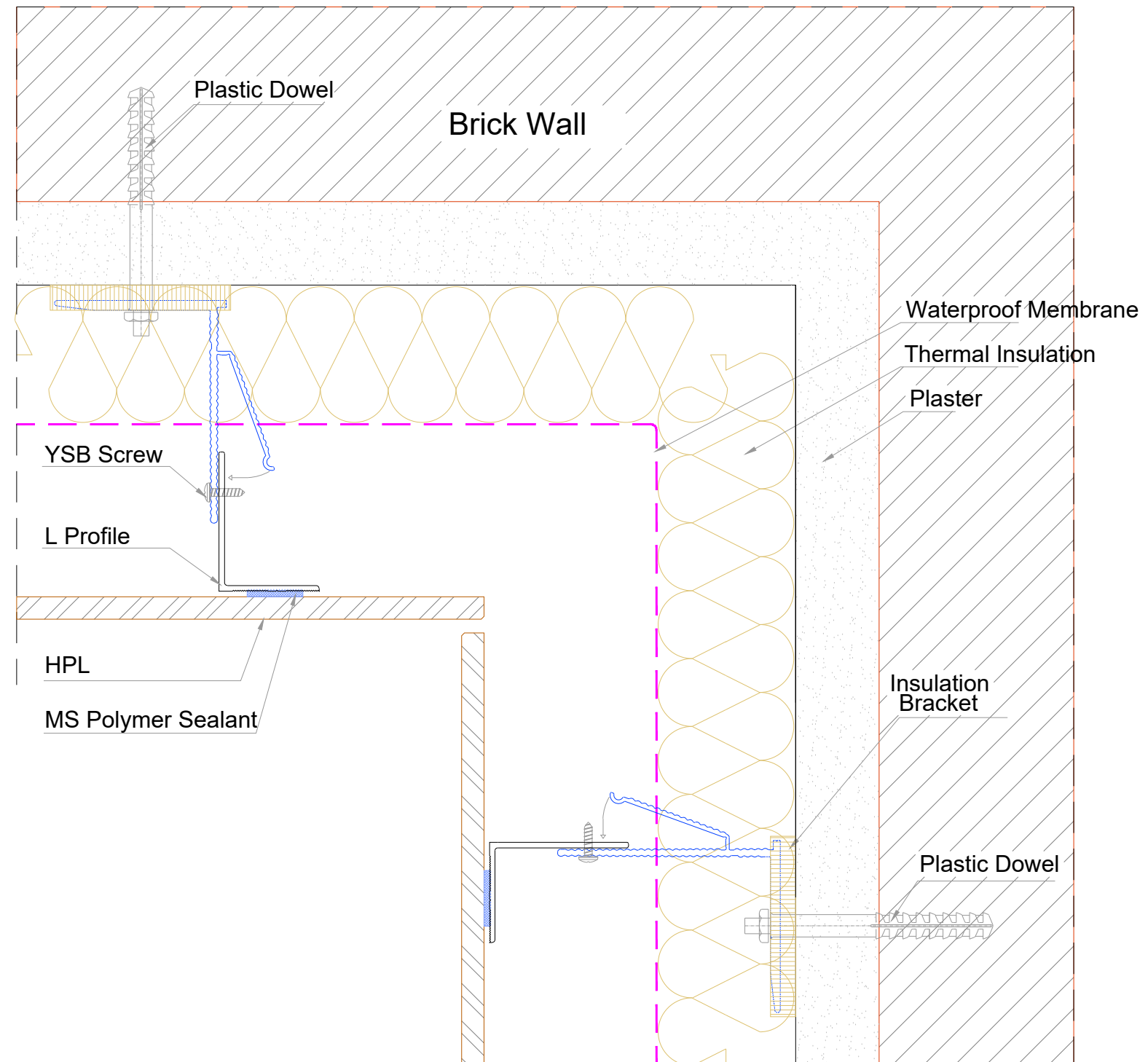
- 1. IZOFIX SUPPORT BRACKET
- 2. T PROFILE
- 3. IZOFIX MAIN BRACKET
- 4. MS POLYMER SEALANT
- 5. PLASTER
- 6. THERMAL INSULATION
- 7. WATERPROOF MEMBRANE
- 8. HPL
- 9. PLASTIC DOWEL
- 10. STEEL DOWEL
- 11. BRICK BLOCK
- 12. CONCRETE BEAM

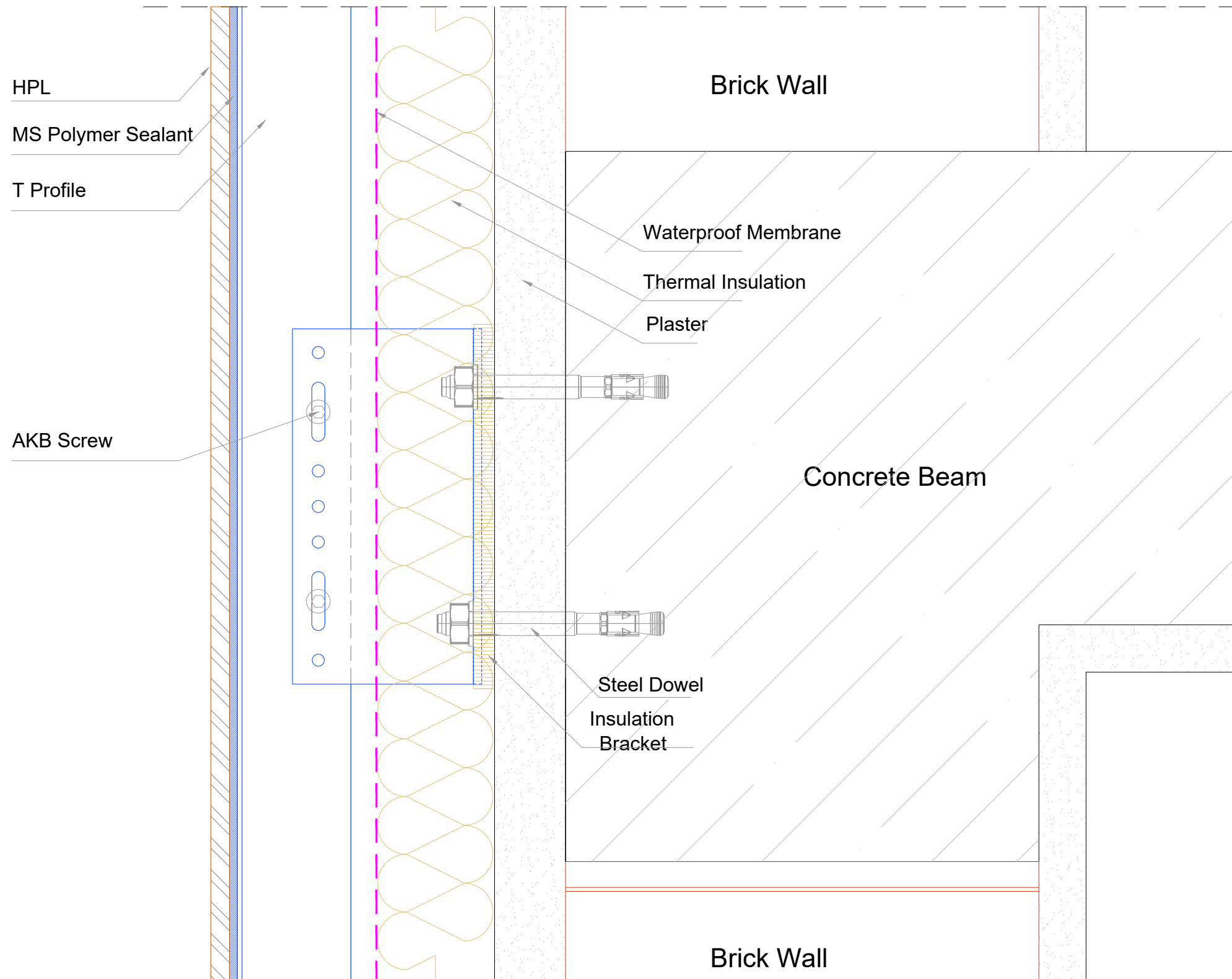


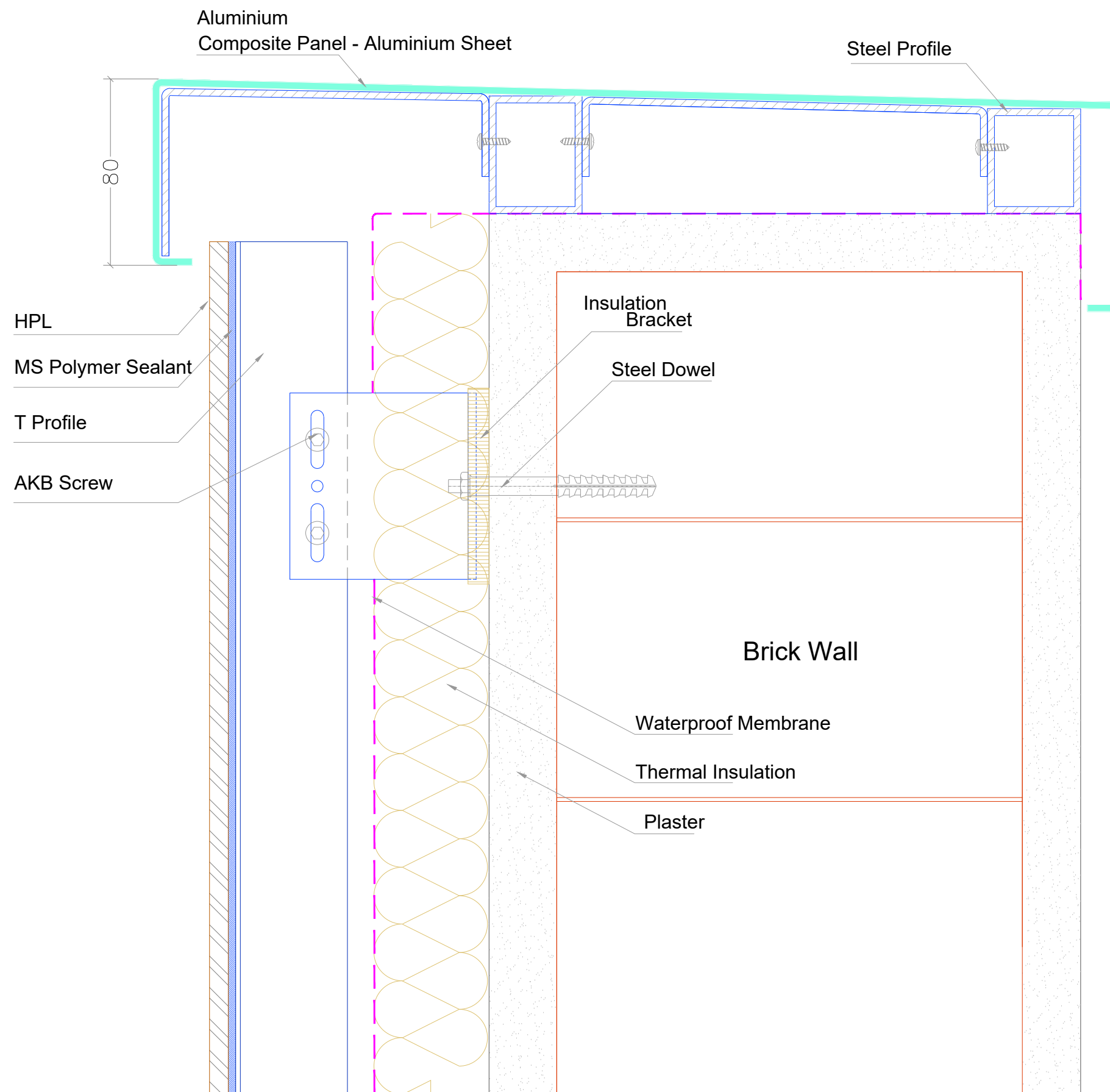




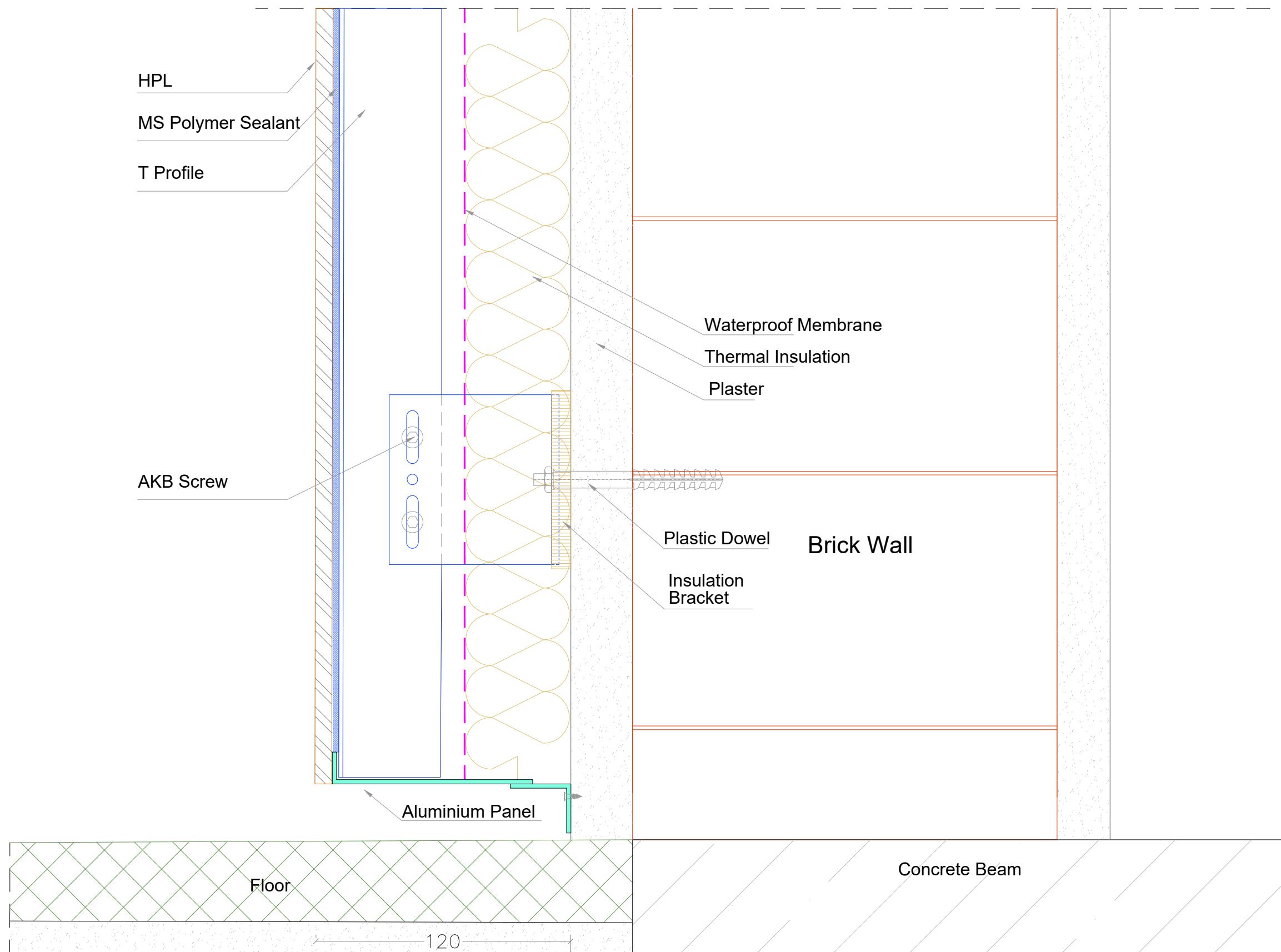


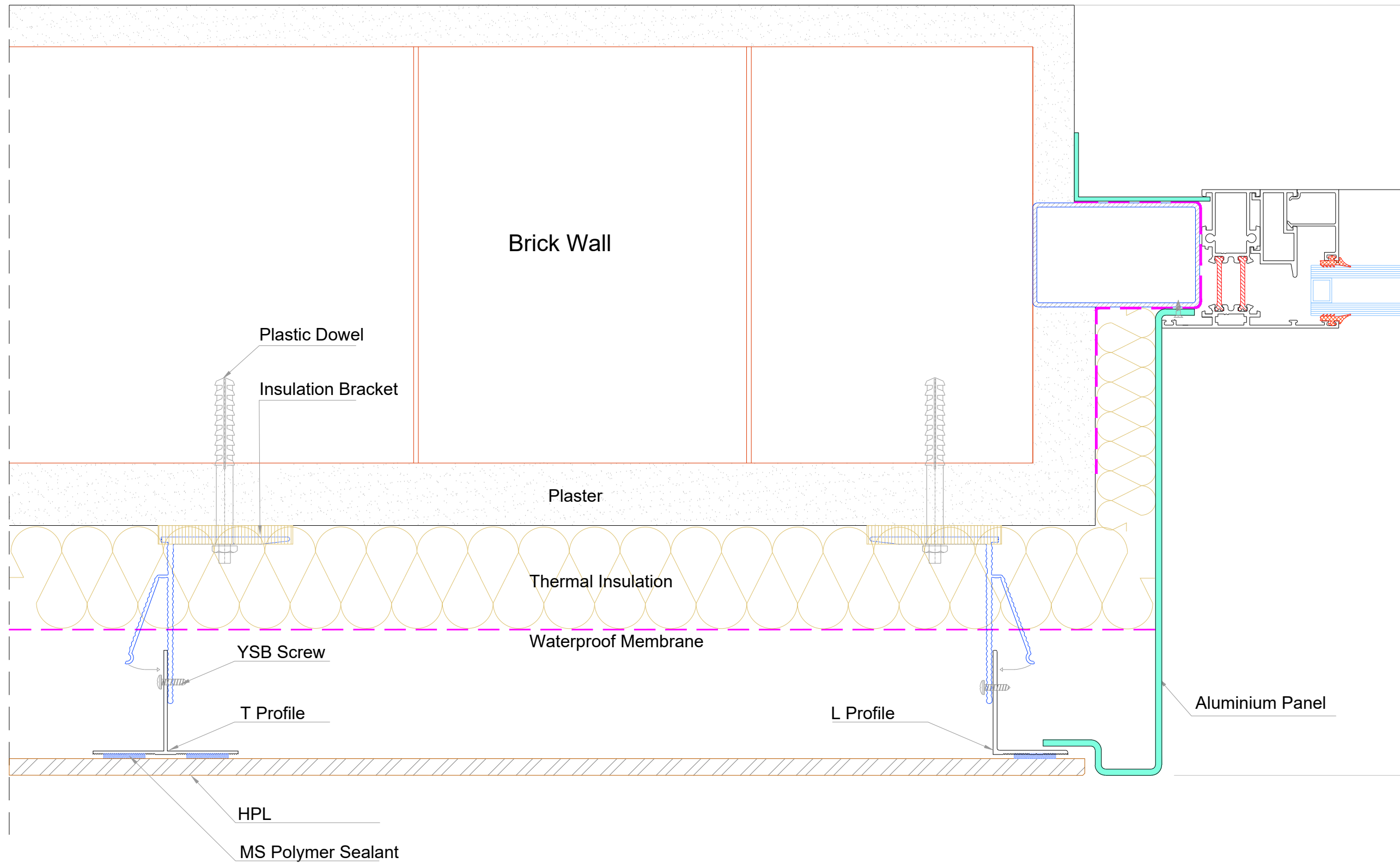


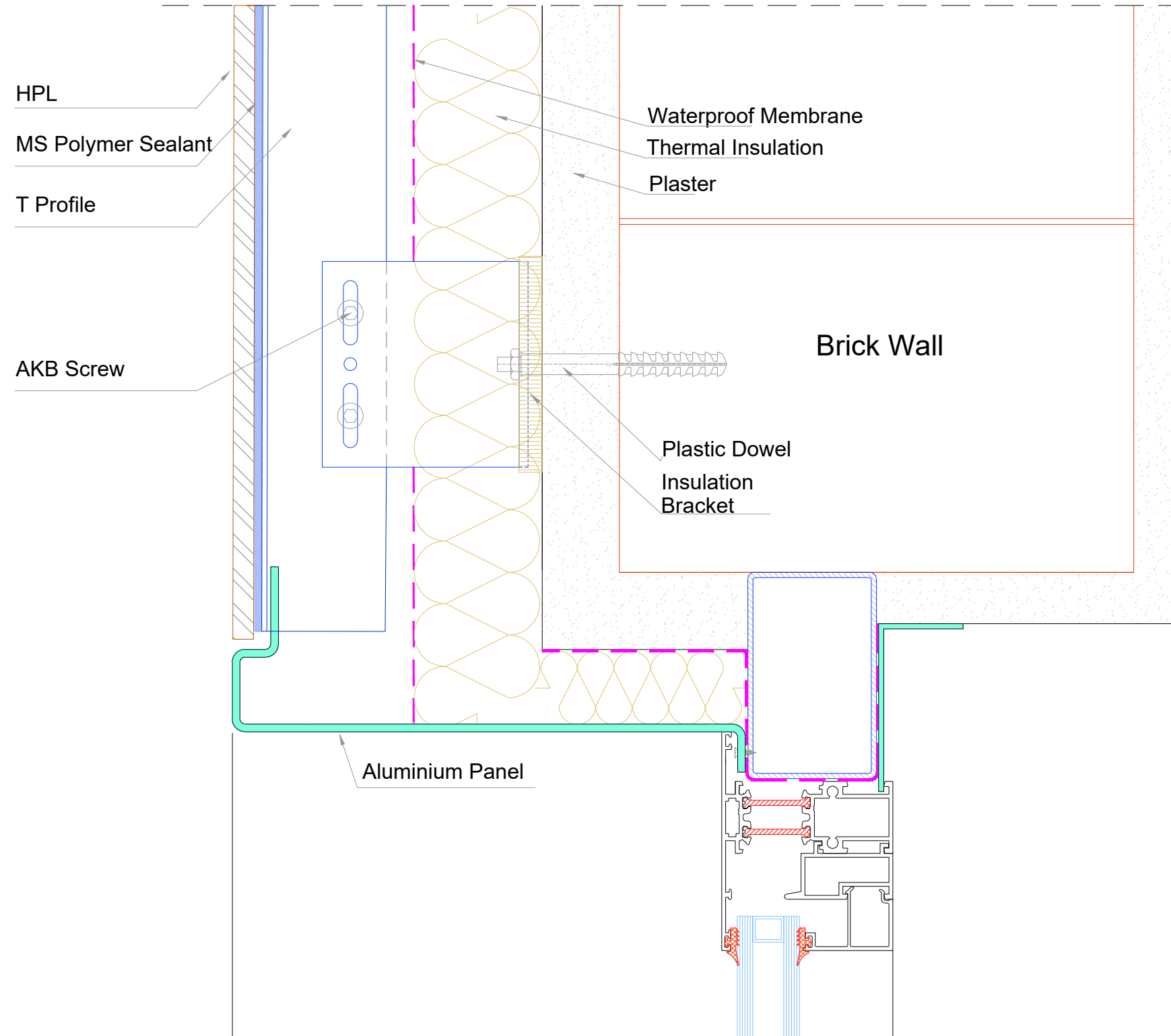


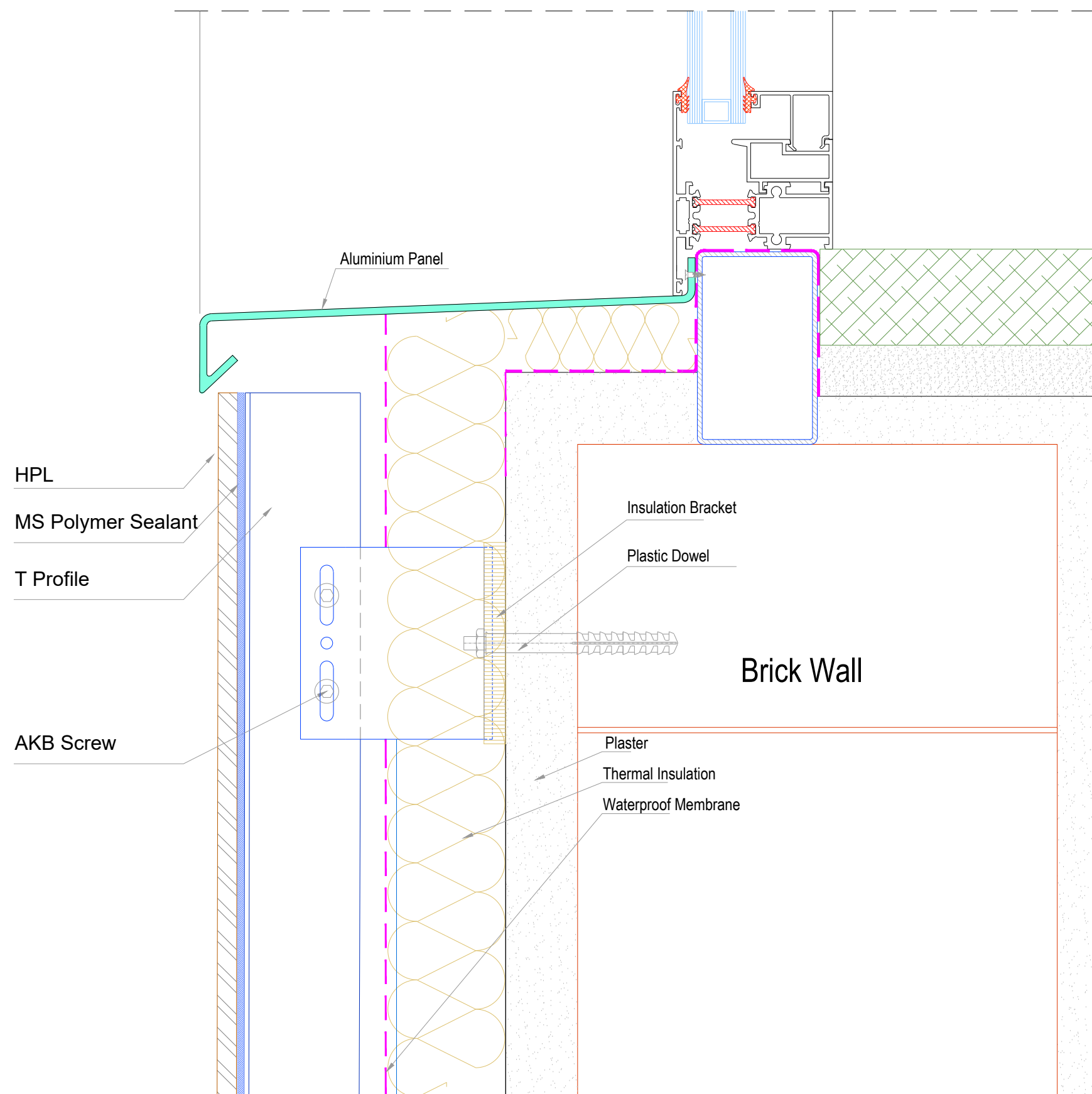


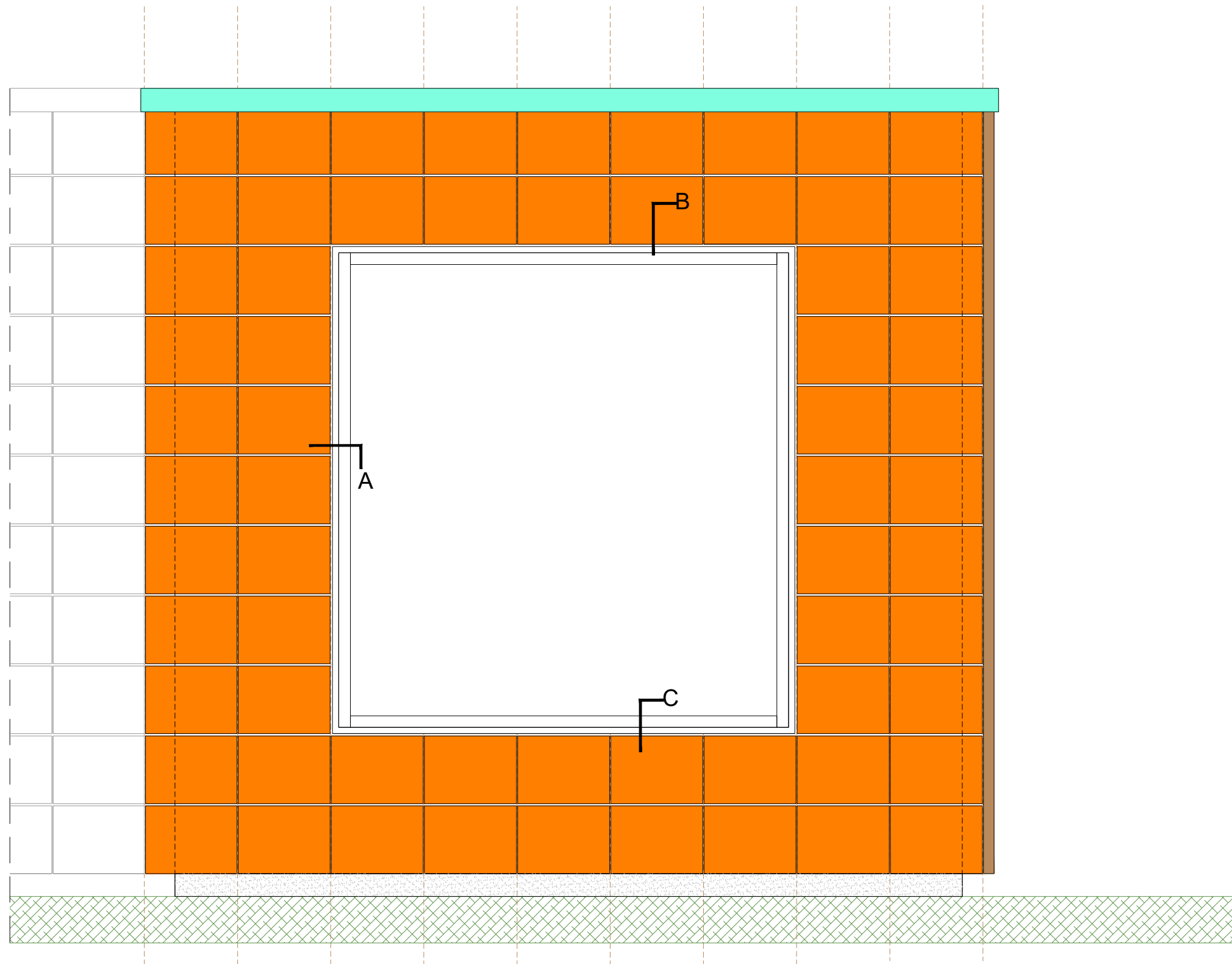
DETAIL 5

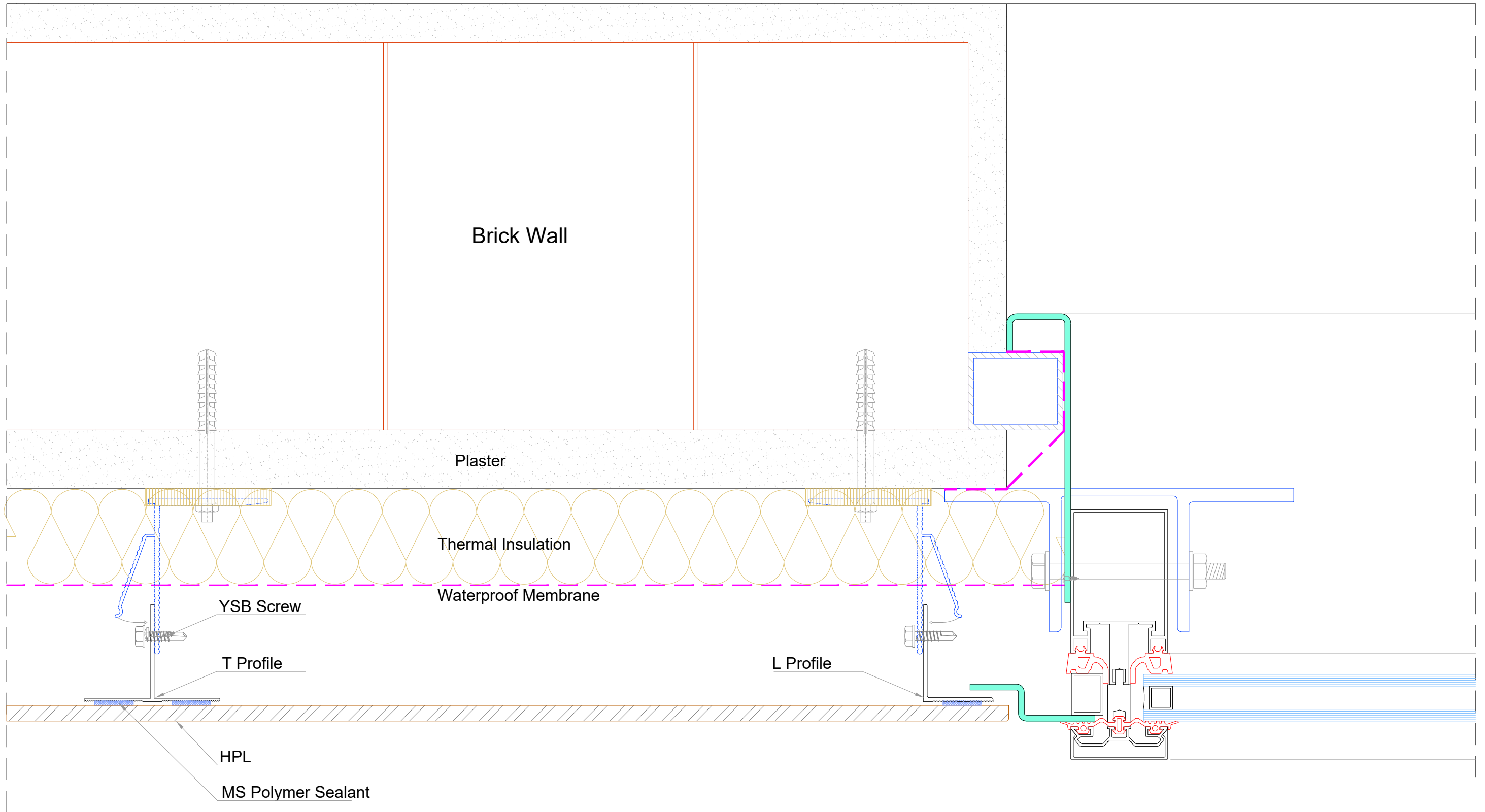




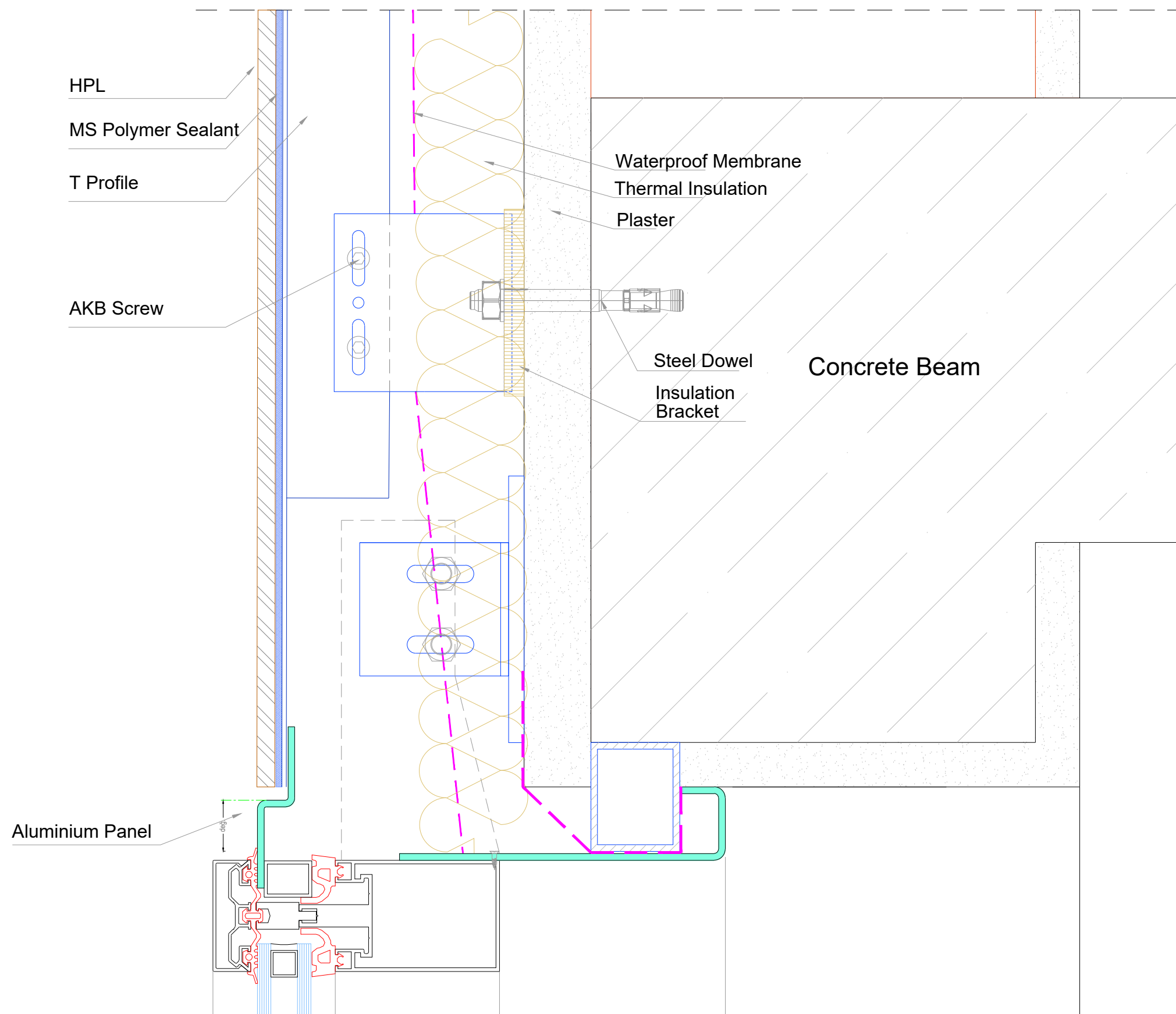




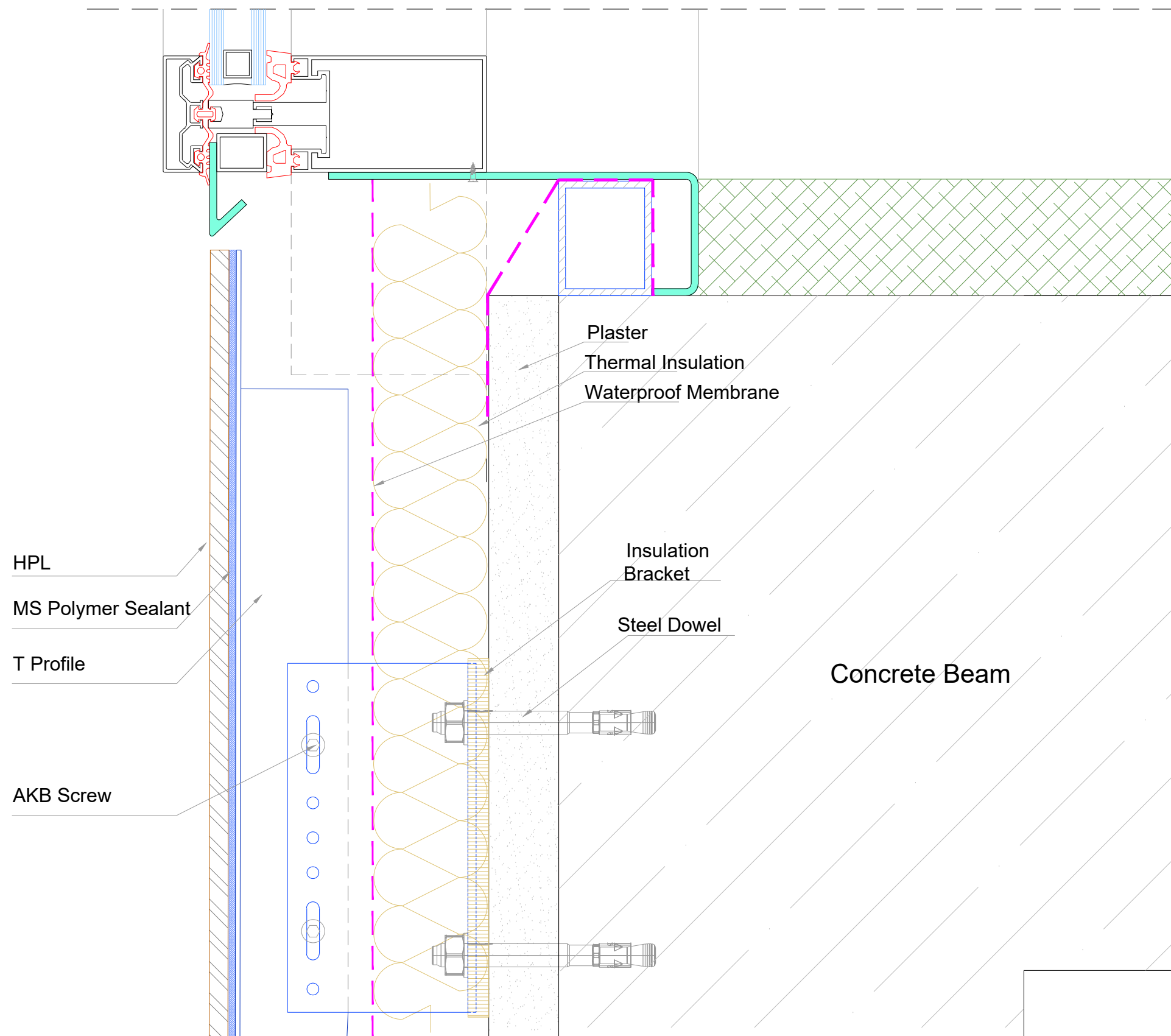




DETAIL A



DETAIL B



DETAIL C